

V8 Thunder Cars ***NEZ***

North European Championship ***Technical Regulations 2016-2018***

Edition (English version): **Update March 2018**

NEZ
RACING
CHAMPIONSHIP



Contents

1 Definitions	4
1.1 Eligible Cars	4
1.2 Limitations	4
1.3 References	4
2 Homologation	4
3 Oversight of Regulations	4
4 Weight Limits	5
5 General	5
5.1 Engine	5
5.2 Electrical System	6
5.3 Exhaust System	7
5.4 Mounting of Front to Front Fenders	8
5.5 Fuel	8
5.6 Upper A-Frame Mounting	8
6 Transmission	9
6.1 Gearbox	9
6.2 Shifter Mechanism	9
6.3 Rear Axle	10
6.4 Drive Shaft	10
6.5 Master Cylinder	9

6.6 Clutch Cover	10
7.0 Wheels	10
7.1 Rims	10
7.2 Tires	10
8.0 Brakes	10
8.1 Front Brake Discs	11
8.2 Rear Brake Discs	12
8.3 Brake Pads	11
8.4 Brake Cylinder	11
8.5 Update Kit – Brakes	12
9.0 Chassis/Body	12
9.1 Minimum Heights	12
9.2 Steering Wheel	12
9.3 Seat	12
9.4 Foot Rest	12
9.5 Chassis and Body	12
9.6 Shock Absorbers	13
9.7 Springs	13
9.8 Front Anti-Roll Bar	14
9.9 Rear Anti-Roll Bar	14
10 Safety Equipment	14
10.1 Roll Cage	14
10.2 Safety Belt	14
10.3 Fire Extinguisher	14
10.4 Safety Fuel Cell	15
10.5 Defuelling of Fuel Cell/ Fuel Sample System FIA	15
10.6 Other Safety Regulations	15
11 Appendixes	16
11.1 Appendix 1.1	16

1 Definitions

1.1 Eligible Cars

Cars delivered by Performance AutoMotive Scandinavian AB (PASAB). Eligible models: Chevrolet Camaro Gen.5 and Gen.6, Ford Mustang Gen.5 and Gen. 6 and Dodge Challenger Gen.3 with chassis marked CCR Mk 1 or Mk 2.

1.2 Limitations

Any modification or deviations not explicitly approved by these regulations are strictly prohibited unless given permission by PASAB through sanction of the NEZ Racing Commission, who sanctions or ratifies further modifications or deviations.

A permitted modification must never lead to an unauthorized modification.

The only sanctioned changes that are allowed are normal adjustments, service and replacement of damaged parts.

These parts may only be replaced by homologated CCR Mk1 or Mk2 parts according to appendix 1.1 Chevrolet Camaro, appendix 1.2 Ford Mustang, appendix 1.3 Dodge Challenger.

Damaged parts on body or body parts, paint and decals must be repaired and/or replaced as soon as possible after the race.

1.3 References

Some paragraphs in this document refer to the Technical Regulations (TR) of the Swedish ASN (SBF), which can be downloaded from www.sbf.se > Racing > Regler > Tekniska regler TR.

2 Homologation

These regulations are based on CCR Mk1 or Mk2 Work Shop Manual and on spare parts homologated by PASAB according to appendix 1.1 Chevrolet Camaro, appendix 1.2 Ford Mustang, appendix 1.3 Dodge Challenger.

3 Oversight of Regulations

Oversight of these regulations are made according to the regulations of the SBF. Interpretations of these regulations shall be made in consultation with the Racing Commission/Technical Committee of the SBF together with PASAB.

4 Weight Limits

Minimum weight including driver, 1215 kg. In case ballast is used it must be placed in the intended ballast box. Provisions for the ballast to be sealed has to be made. Minimum weight refers to the weight of the car during practice, qualification or race including the driver. The car can be ordered in for weighing any time before, during or after practice, qualification or race and must comply with the minimum weight.

All Gen.6 body's (Camaro & Mustang) must mount two ballasts (Total 12Kg) according to below pictures, for compensation of lighter body weight. They should be sealed by technical stewards. Those ballasts are specified in Appendix 1.1, 1.2



5 General

5.1 Engine

The only engine allowed is the LS3CC manufactured by GM Power Train. PASAB is the exclusive supplier of this engine. The engines are sealed. No work which requires the seal to be broken is allowed on the engines. If any seals from PASAB/Ultra Motors is missing from an engine, the competitor will be excluded from the current championship. Competitors are responsible for all seals. Valve cover is not sealed.

Ultra Motors in Södertälje, Sweden, and Minges Universalservice in Trögstad, Norway are the official engine service suppliers and the only parties allowed to renovate, repair or serve these engines. Ultra Motors are responsible for engines from the Swedish, Finnish and Danish markets, Minges Universalservice are responsible for engines from the Norwegian market.

Only fully synthetic engine oil with a viscosity of 5W-30 and in accordance with the following standard, API SN, ILSAC GF5 may be used.

Spare engine will be supplied by PASAB in Sweden.

Unregulated parts:

Starting engine.

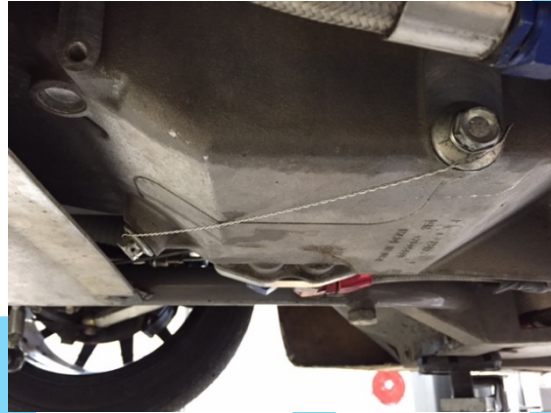
Clutch cover.

Throwout bearing. (Release bearing)

Spark plugs.
Ignition cables.
Oil filter.

Safety Wire for Oil Plugs:

A through-hole may be drilled in the oil plugs to allow a safety wire to be used according to image below:



Engine Management (ECM)

The original GM LS3CC is the only Electronic Control Modul (ECM) allowed. The ECM is sealed. Connecting to, or up- or downloading information is prohibited. Only the white original cable from the ECM may be connected to the tachometer. The OBD-connection is sealed.

Any alteration of the ECM is prohibited.

Official technicians/stewards has free access to the ECM of each competitor/car.

Official technicians/stewards are authorized to:

- exchange ECM units between competitors/cars.
- check the software of the ECM.
- break the seal of an ECM and to reseal it after trouble shooting the unit.

5.2 Electrical System

Battery Optima model 34/78. PN 8004-250 Red Top Starting.

Laptimer may be installed

Transponder must be fixed to the right front frame tube in pre-drilled holes.

The original instruments must not be removed.

Digital meters (of dash/datalogging type) can be installed.

Negative battery cable must be connected to the central ground connection of the car. The positive battery cable must be connected to the ignition switch. Observe! All wiring must be routed through the prefabricated entry system of the chassis, no new holes may be made.

The only sensors allowed to be connected to dash/datalogging system are:

G-force sensor.

Sensor to measure interior temperature of driver compartment must be installed inside loggerbox.

Voltage sensor (Volt)

Engine revolution sensor.

Wheel speed sensor (a maximum of one sensor) fixed to left front wheel.

Lap Time sensor.

Oil pressure and oil temperature sensor.

Engine coolant temperature sensor.

Lambda sensor.

Fuel pressure sensor.

GPS module.

5.3 Exhaust System

Headers and Y-pipes CCR Mk1/ CCR Mk2 according to appendix 1.1, 1.2 and 1.3

CAMCUP13 Muffler system Ferrita.

CAM09001 Catalytic converter Ferrita.

H2111C Exhaust tail pipe only, old version, only applicable outside Sweden.

Noise level limit 95db (Only applicable in Sweden) according to Technical Regulations (TR4) of the SBF.

If noise level (db) differs between countries. The rule is to follow hosting countries noise level (db), were race event take place.

Thermal wrap may be fixed to the exhaust system at the two following points: To lessen the heat radiation on the generator thermal wrap may be installed on the front part of exhaust pipe 1 according to image 1 below:

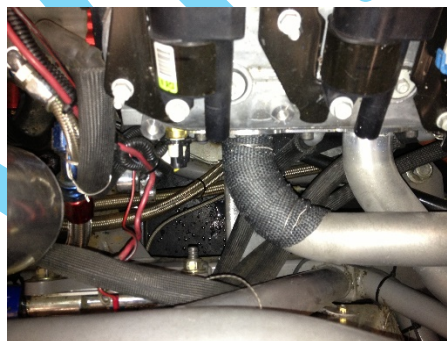


Image 1

In order to decrease the heat radiation on **Rear axle and** fuel tank, thermal wrap may be installed according to **new** image 2 below:

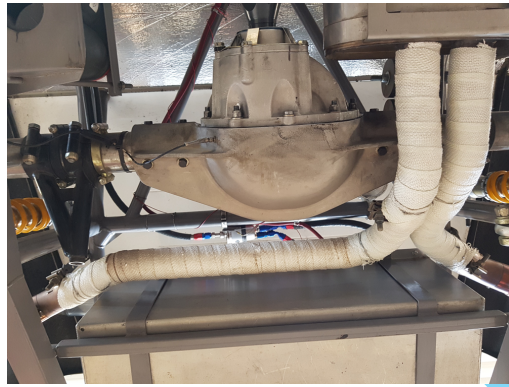


Image 2

To prevent the heat radiation from the exhaust pipes on the generator cool air is allowed to be directed to the generator according to image 3 below. The following parts must be used for this purpose: PN RE200 Air Naca Duct and PN RE2031 Air Hose.



Image 3

5.4 Mounting of Front to Front Fenders

Original mounting parts between the front and the fenders may be replaced. Mounting parts are free of regulation with the following exceptions: Mounting parts must be mounted, screwed or riveted in the original fiberglass/plastic edge on front and fender. No mounting parts must be installed from the outside of front and fenders.

5.5 Fuel

According to V8 Thunder Cars NEZ Sporting Regulations.

5.6 Upper A-Frame Mounting

To mount PN 2213907 (Precision Max Upper A-Frame) to the chassis the bolted joint must consist of bolt, washer + washer and a metal locknut: Bolt: UNC 1/2" x 2 1/2". Locknut UNC 1/2", thread depth 7/16 (11mm). Steel washer t = 3/32" (2,38mm). The width of the sum of mounted Camber shims must not exceed 16,1 mm.

6 Transmission

6.1 Gearbox

Four speed G-Force PN GF4A - G101A

Gearing:

1st = 2,45:1

2nd = 1,57:1

3rd = 1,22:1

4th = 1,00:1

Reverse = 1,93:1

6.2 Shifter Mechanism

Shifter Mechanism is free of regulation but must have an H-shifting pattern and fit in the original opening of the transmission tunnel.

6.3 Rear Axle

Model CCR Mk1-Winters, according to appendix 1.1, 1.2,1.3.

Type "Ford 9".

Gearing 3.50:1

Differential: Quaife ATB.

Toe and camber may be adjusted according to the following:

Toe = to a maximum of +/- 2 mm for each side

Camber = to a maximum of + / - 0,3 degrees.

6.4 Drive Shaft

Aluminum: PN QM188395

Steel: PN 243950

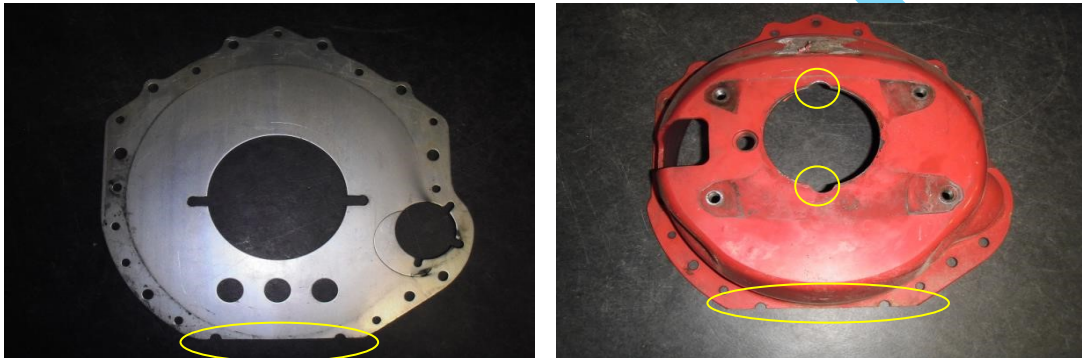
6.5 Master Cylinder

The following parts from Howe and Tilton may be used without limitations:

Howe PN 524312, Howe PN 524314, Howe PN 524316, TLT PN 74-875, TLT PN 74-1000.

6.6 Clutch Cover

Complete clutch cover, certified by SFI. All included parts to the clutch cover must be installed. The clutch cover may be modified according to the images below, trimmed at the bottom of the sheet in order to raise the clearance of the car; elliptic holes at the edge of the center hole of the clutch cover may be made according to the yellow markings on the image in order to simplify disassembly/assembly the gearbox when a fixed release bearing is installed. No other modifications than those presented below are allowed.



7.0 Wheels

7.1 Rims

Dimension maximum 9 x 17. Minimum offset ET35. Must be made of metal with exception of magnesium. The hub must not extend beyond the outer rim edge.

A longer wheel bolt may be used for the front rim hubs. Replace the front wheel bolt PN 20612 with the longer rear wheel bolt, PN 20613.

7.2 Tires

According to V8 Thunder Cars NEZ Sporting Regulations

8.0 Brakes

Original CCR Mk1/Mk 2 according to appendix 1.1, 1.2, 1.3

The brake pad wear may be compensated by inserting shims between the backside of the brake pad and the brake caliper cylinder. Manufacturing and design of the shims are not regulated but they must be made of steel or aluminum.

The material in the brake shields RE221R/RE221L may be reduced by the two following alternative methods presented in the image below:

Alternative 1: Drill 3 holes with a diameter of 30 mm.

Alternative 2: Remove material inside the red line. Measured from the outer edge of the brake shield to the inner edge of the horizontal line, the radius is 50mm.



To decrease the heat radiation from exhaust to the brake and clutch fluid reservoirs PN B9524 may be installed according to the image below.



8.1 Front Brake Discs

Original CCR Mk1/Mk2 + **New 2018 AP disc**, according to appendix 1.1, 1.2, 1.3

8.2 Rear Brake Discs

Original CCR Mk1/Mk2 + **Use old front disc rear**, according to appendix 1.1, 1.2, 1.3

8.3 Brake Pads

Not regulated

8.4 Brake Cylinder

The following brake cylinders from Howe and Tilton may freely be shifted between front and rear brake circuit: Howe PN 524312, Howe PN 524314, Howe PN 524316, TLT PN 74875, TLT PN 74-1000.

8.5 Update Kit – Brakes

Original CCR Mk1/Mk2 according to appendix 1.1, 1.2, 1.3

New PF140 brake kit valid from 2018 according to appendix 1.1, 1.2, 1.3

9.0 Chassis/Body

9.1 Minimum Heights

~~Splitter minimum height measured from lower edge to level surface = 40mm.~~

~~Area of measurement = Between the fixation points on the two outer adjustable struts of the splitter and between the two longitudinal angle bars mounted in the splitter. The crossbraces are mounted in these angle bars. See images below.~~



~~Minimum frame height measured from lower edge of side rail to level surface = 58mm.~~

~~Area of measurement = A 100mm area measured from the front edge of the outer side rail.~~

~~Measurements must be made on a level surface with the driver inside the car.~~

~~Measurements may be made anytime during a race weekend. The height shall be measured with a minimum tire pressure of 1,5kg.~~

9.2 Steering Wheel

Not regulated but CCR Mk1/Mk2 Steering Wheel hub WQRS must be used. A "master key" slot may be made in wheel hub and the steering column.

9.3 Seat

Seat according to the SBF Technical Regulation TR 5.16.

Mounting bracket between seat and adjustable undercarriage according to the SBF Technical Regulation TR 5.16.

The adjustable undercarriage (sliding seat) may be removed. The original mounting holes in the floor must be used and must not be altered or modified.

9.4 Foot Rest

An individually adapted foot rest may be installed in the floor panel with pop rivet.

9.5 Chassis and Body

Heat treating or straightening of main frame may only be made by PASAB or by companies approved by PASAB. Approved companies published by bulletin. The bumpers fixed with

bolts may be straightened and welded but original shape, dimensions and material must be preserved.

Chassis- and bodyparts may only be replaced with original CCR Mk1/Mk 2 parts according to appendix 1.1, 1.2, 1.3.

Two (2) hood vents, PN B940, may be installed on the hood.

The following decals must be fixated and may not be altered:

Grill/Front decal PN PF024 = Camaro.

Grill/Front decal PN MUSTHLD = Mustang

Grill/Front decal PN CHAHLN = Challenger

Grill/Front decal PN 81131-44141 = Camaro Gen.6

Grill/Front decal PN 81321-44141 = Mustang Gen.6

Rear Light decal PN PF025, PF026 = Camaro

Rear Light decal PN MUSTLDR, MUSTLDL, MUSTCAP = Mustang

Rear Light decal PN CHATLD = Challenger

Rear Light decal PN 81131-44541 = Camaro Gen.6

Rear Light decal PN 81321-44541 = Mustang Gen.6

9.6 Shock Absorbers

Front: Öhlins type CAX - 971

Rear: Öhlins type CAX - 972

Öhlins Auto Norden, Dagvindsgatan 10, 652 22 Karlstad, is the exclusive supplier of shock absorbers and springs.

Service and sealing may only be made by the above mentioned company. The two sealings below are approved along with the yellow paint sealing of the nut. The yellow paint seal together with one of the two seal alternatives must always be unbroken



9.7 Springs

Front Spring: Öhlins 01092-79 = 190N/mm

Front Spring: Öhlins 01092-89 = 210N/mm

Front Spring: Öhlins 01092-91 = 230N/mm

Front Helper Spring: Öhlins 05173-07 or 05173-01/KH. Must be installed.

Front Spring Support: 05281-01 (53/74/19). Must be installed.

Rear Spring: Öhlins 00698-06 = 44N/mm

Rear Spring: Öhlins 00698-14 = 60N/mm

9.8 Front Anti-Roll Bar

SC1449HW112 = 1-1/2" according to appendix 1.1, 1.2, 1.3.

SC1449HW138 = 1-3/8" according to appendix 1.1, 1.2, 1.3.

SC1449HW114 = 1-1/4" according to appendix 1.1, 1.2, 1.3.

Must not be decoupled.

9.9 Rear Anti-Roll Bar

Original delivered with car, dimension = 19mm (3/4"). May be decoupled.

10 Safety Equipment

10.1 Roll Cage

Certified chassis model CCR Mk1 / CCR Mk2 according to appendix 1.1, 1.2, 1.3.

All tubing within a radius of 50 cm of the head of the driver (measurement made with driver belted in seat) shall be covered with FIA homologated flame resistant cushion for protection.

10.2 Safety Belt

Six-point harness compulsory. According to the SBF Technical Regulation TR 5.6.

10.3 Fire Extinguisher

Sparco model 0146EM41A with extinguishing agents for regular petrol.

Lifeline model L-102-400-001 with extinguishing agents for regular petrol.

The system must be in active mode (defined as possible to activate without removing any safety pins) during practice, qualification and race to the time for parc-fermé has expired or the car is released to the team.

10.4 Safety Fuel Cell

Original CCR Mk1/Mk2 according to appendix 1.1, 1.2, 1.3.

10.5 Defuelling of Fuel Cell/ Fuel Sample System FIA

PN: Name:

SPT 08.5655/L/JV Stäubli, panel mounted plug.

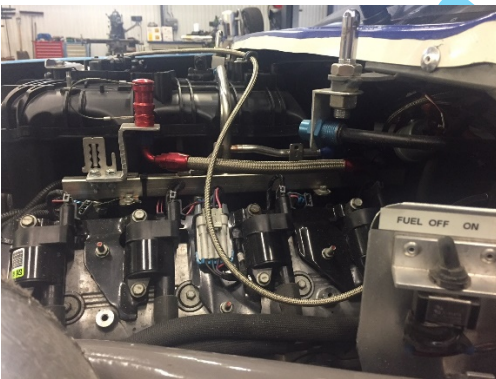
SPT08.1655/L/JV Stäubli, Female.

The drain plug must be placed in the aluminum sheet by the fuel cap according to the image below on **Gen.5 models**:



Fuel Sample. To protect ECM electric wire should be disconnected at tank armature. Electrical wire with switch from battery connects to tank armature and control fuel pump directly. After defueling reconnect electric wire from ECM.

The drain plug must be placed in engine bay according to the image below on Gen.6 models:



10.6 Other Safety Regulations

Unless specified otherwise in these regulations, the Technical Regulations of SBF TR 5 supersedes these regulations.

On Mustang Gen.5 the field of view is limited with regards to using the left rear view mirror. PN 15175-A31 may be replaced with PN 22548 Longacre.

11 Appendixes

11.1 Appendix 1.1

Homologated spare parts including part numbers for Chevrolet Camaro Gen.5 – Gen.6

11.2 Appendix 1.2

Homologated spare parts including part numbers for Ford Mustang Gen.5 – Gen.6

11.3 Appendix 1.3

Homologated spare parts including part numbers for Dodge Challenger Gen.3

Official



NEZ Appendix 1.1 Chevrolet Camaro Gen.5 – Gen.6

CCR Mk1/Mk2 homologated parts and part descriptions.

P.N.	Description
LS3CC	LS3CC engine
E1599	Dry Sump Oil Tank
24255748	Pressure plate & Disc
GF4A	Transm. GF4A/G101A Special
10702P	Frame & Cage Assembly, Perimeter
35803	Front Frame, Camaro Cup
36610	Tail Section
B890	Aluminum Interior Incl Heat Shields
342508	Radiator Duct Work Kit-RR LS3CC
342518	Radiator Duct Work Kit Camaro + Mustang Gen.6
82120CAM	Front Bumper Kit, Camaro, includes hood support
8212000	Front Bumper Camaro + Mustang Gen.6
8212100	Front Bumper Hood pin bar Camaro Gen.6
82220CAM	Rear Bumper Kit, Camaro
8222200	Rear Bumper Camaro Gen.6
SCA827	Collapsible Steering Shaft
WQRS	Steering quick release.
HE-236	Rack, Woodward Power 17.25" Threaded, .220 t/b, 955 valve, 1.5" cylinder
PF046	Rack limiter plate
14720	Rack Spacer 1/4"
14730	Rack Spacer 3/8"
T40S	P/S Pump Howe
PS2005	P/S Pump pulley Howe
PS3005	P/S Pump bracket Howe
KRC63200000	P/S Pump Evolution Alum.
KRC20002000	P/S Pump Alum.
KRC20020650	P/S Pulley LS3CC
KRC71410040	P/S Bracket LS3CC
PS8302	Power Steering Hose Kit W/Cooler
PS501	Power Steering Tank W/Bracket
R3315	Sleeve 5/8"x15" Hex Alum.
23285	Tie rod 5/8"-18 LH Inside
23286	Tie rod 5/8"-18 RH Outside
23297	Tie rod inner stud
23298	Tie rod outer stud
31491	Bolt Kit suspension

22320	Ball Joint, Precision Upper
22330	Ball Joint, Stud Only Upper
2213907	Precision Max Upper A-Frame 9.75"
22001	Upper A-Frame Key Kit
60203	A-frame Shims 1/8"
60204	A-frame Shims 3/16"
60205	A-frame Shims 1/4"
60206	A-frame Shims 3/8"
60207	A-frame Shims 1/2"
60210S	A-frame Shims Kit
229617C	Lower control arm
22410	Ball Joint, Precision Lower
22430	Ball Joint, Stud Only Lower
AU-AM12T	Rod end 3/4" RH male
22949	Strut arm rod end angled
AU-AB12T	Rod end 3/4" LH male
346104	Spindle, Right 5X5
34610L4	Spindle, Left 5X5
SC1449HW114	Sway bar 1-1/4"
SC1449HW138	Sway bar 1-3/8"
SC1449HW112	Sway bar 1-1/2"
23925	Bushing Delron for splined swaybar
23926	Swaybar arm Left
23927	Swaybar arm Right
23611	Rear Sway Bar Kit
31180	Panhard Axle Mount Rear Ford 9"
31990	Axle clamp, special for 3" tube
30786	Panhard Assembly
30780	Panhard Mount, Frame
3252	Axle Stops
32009	Winters 9" third link bracket
20613	Wheel Studs rear
PF059	Brake uppgade kit MK2 front. Parts below marked *
36571	Front hubs 5x4,75, Steel Mk2 *
20536	Hub dust cover Mk2 *
20573	Brake rotor hat *
36574	T-nuts for hat *
300-0802	Bolt for T-nut *
36573G	Hans cooling gasket *
SRS800	Brake blower fan new
SRS801	Brake blower fan adapter new
SRS400	Brake blower fan * Out of production.

SRS002	Fan blower replacemnt
SRS004	Engine fan blower replacement
CAMSCRMK2	Nose Screen, Camaro 2013 *
RE308	Brake cooler nose air duct right *
RE308L	Brake cooler nose air duct left *
RE2034	Brake Hose 4,5" Length 14" *
RE2031	Brake air hose-12' length (4m) *
RE31000	Brake Air duct box Right Camaro + Mustang Gen.6
RE31000L	Brake Air duct box Left Camaro + Mustang Gen.6
RE31000SCR	Brake Screen Camaro + Mustang Gen.6
B941L	Brake fan mount Left Pro syst *
B941	Brake fan mount Right Pro syst *
205500	Front Hubs, 5X4.75, Steel Mk1
20538	Hub Dust Cover Mk1
205700	Rear Hubs 5x4,75 Steel
20547	Drive flange 9"
ALL44122	Wheel spacer 9"
TG3001-33	Axle gundrilled Left 33"
TG3001-37	Axle gundrilled Right 37"
RV102	Rear end vent assy 9"
KN62-1460	Filter for vent tank
32258	Axle tube seal 9"
QDR1	Quafie ATB Diff.
CCRMK1/Winters	Rear axle 9"
W95590	Winters 9" housing with axle tubes
WA94303	Winters 9" center section
HUR114-7494	Shift Boot Hurst
PM8182	Alternator 75A
KRC8172	Alternator 50A
90-293-1630	Alternator 40A
RE200	Naca duct single hole
KRC40140640	Alernator pulley LS3CC
GDY4060720	Drive belt LS3CC
GDY4060725	Drive belt to T40S P/S pump
E113	Alternator bracket LS3CC
E7015	ECM mount LS3CC
PF062	GM ECM LS3CC
E7016	Engine wire harness LS3CC
9026, 9027	Engine Skid Pan
R100	Engine spacer ¼"

R1005	Engine spacer ½"
E15910	Engine vent tank for valve covers LS3CC
E1597	Oil filter block off line adapter LS3CC
82892	Hydr. Bearing line and bleed kit incl. coupler
QM188395	Drive Shaft, Aluminum 39.5"
QM188545	Drive Shaft, Yoke
243950	Drive shaft steel
280	U-Joint Serve Duty
329-10	Drive Shafts U-Bolts 9"
369YOKE	Machined Yoke
36299, 36299L	Motor mounts front LS3CC
3611	Motor Mounts, Left
3613	Motor Mounts. Right
ATM2271	Water temp fitting at water pump 3/8" NPT LS3CC
58982	Rad. Hose reducer 1,75" to 1,5" LS3CC
58981	Rad. Hose reducer 1,5" to 1,25" LS3CC
342411	Vertical surge tank LS3CC
28474	,75" Dia. 90° hose from surge tank to water pump LS3CC
HRP90150	1,5" 90° blue hose LS3CC
HRP45175	1,75" 45° blue hose LS3CC
34312	Rad. Hose connector 3,5" Long (1 of 1,5" dia.) LS3CC
34322	Rad. Hose connector 4" Long (1 of 1,75") LS3CC
34129C10	Radiator, W/Oil Cooler
3427	Radiator Cap
3426	Spool thermostat replacement
34221	Radiator Hoses, Overflow Tank & Lines
342026	Upper Radiator Mount, Left
342027	Upper Radiator Mount, Right
M162K	Fan, electric 16" pull
MFA104	Fan, mounting kit
CAN22625	Remote Oil Filter Mount
E3005	Engine Oil Filter Line Kit LS3CC
E1599	Dry sump oil tank LS3CC
E164	Dry sump oil tank mounting brackets and straps LS3CC
E165	Dry sump oil tank heat shield LS3CC
50-625-7612	Engine Oil cooler in Air box 7,5"x11" LS3CC
22-M22AN10-SE	Setrab Cooler fitting
E166	Engine Oil cooler mount LS3CC
GS1003-12	Seals It gasket

21044	SLP Air box LS3CC
25166571	Plastic GM filter mount LS3CC
25042562	Air filter GM/AC Delco
E146	Alum.angle filter box mount LS3CC
E7004	20° 3,5" elbow LS3CC
E7003	3,5" to 4" Hose connector LS3CC
E145	Air deflector LS3CC
H11213C	New headers LS3CC narrower chassi clearance LS3CC
H2024C	Y-pip LS3CC 3,5" to 3,5" LS3CC
H2111C	Exhaust tail pipe only, old version
B907	catalytic convertor heat shield
H3032	Exhaust Hanger Centred Around catalytic Converter
H3031	Muffler / Exhaust Hanger Rear
H3028	Exhaust Hanger Rubber
HPFC300	Stainless Exhaust band clamp 3"
PF140	Brake Upgrade kit 2018. Below parts marked #
CP9660-3S4L	AP Caliper, 6 Piston Front Left #
CP9660-2S4L	AP Caliper, 6 Piston Front Right #
CCA029660-355	AP Caliper bracket. #
BCA0212x2286B	Rotor hat (Bell) #
CP2494-589K12	Rotor bolt kit front #
FKCA029660	Fitting kit AP brakes #
120-6387-RS	Wilwood Caliper, 6 Piston, Front. Out of production.
120-6388-RS	Wilwood Caliper, 6 Piston, Front. Out of production.
120-8283L	Wilwood Caliper, 4 Piston, Rear
120-8283R	Wilwood Caliper, 4 Piston, Rear
120-11127	Wilwood Caliper, 4 Piston Rear L&R #
120-11125	Wilwood Caliper, 4 Piston. Rear L&R
CCA0511127310	Caliper bracket #
340910	Cast clamp on bracket 9"
B716SHCS	Caliper bolts
CP5772-1137RA	Rotor, Directional Left. AP Front #
CP5772-1136RA	Rotor, Directional Right AP Front #
CP1901727	Rotor, Directional Left, AP Front and Rear.
CP1901726	Rotor, Directional Right, AP Front and Rear.
CP1901782	Rotor, Directional RH AP Rear
CP1901783	Rotor, Directional LH AP Rear
B926	Brake Cooler plastic holder
B931	Caliper cooler mount
3383219	Brake Line 21" w/90* fitting

338326	Brake Line 26"
FBM2511	Brake Line Fitting
33791	Brake Line Fitting
80171	Painless Brake Light Switch
RT-RD24	Tail Lights, 70 x 118 mm LED Aftermarket
B925	Tail Lights bracket
B92500	Tail Light bracket outer Camaro Gen.6
B92500I	Tail Light bracket Inner Camaro Gen.6
TLT74-875	Master Cylinder 7/8"
TLT74-1000	Master Cylinder 1"
TLT74-200	Fitting Plastic
TLT74-208	Master Cyl. Clamp
524312	Master Cylinder, Remote Reservoir 3/4"
524314	Master Cylinder, Remote Reservoir 7/8"
524316	Master Cylinder, Remote Reservoir 1"
524312K	Master Cyl. O-ring repair 3/4"
524314K	Master Cyl. O-ring repair 7/8"
524316K	Master Cyl. O-ring repair 1"
AU12685	Master Cylinder Hose Clamp
RD109	Master Cylinder Hose 5/16"
524353	Master Cylinder Fitting
B9524	Master Cyl. Reservoir Heat Shield
CP0805420	Master Cylinder Reservoir, Double Port
CP0805424	Master Cylinder Reservoir, Single Port
CP2293-48	Bellows for Master Cylinder Reservoir
524361	Master Alum. Cyl. Reservoir Double port
524360	Master Alum. Cyl. Reservoir Singel port
33814	Braided #4 line
33815	Braided #4 line
BR11078	1/8 npt to 3/16 inverted flare 90*
WW260-1874	Residual Valve 2#
52692	Pedal, Brake Floor Mounted
52992	Pedal, Clutch Floor Mounted
52591	Clutch Pedal Stop
5299	Dead Pedal
WW340-4990	Brake Bias Adjuster
72560	90* Bias Adjuster
TC1000LS1	Throttle Cable LS3CC
52502	Engine mount for throttle cable LS3CC
5237	Pedal, Gas

52351	Throttle Stop
OP-11B	Fuel Cell bracket
13202	Fuel Filler
13202B	Fuel Filler bracket
RE103	Fuel Filler neck top mount Camaro + Mustang Gen.6
RF102	Fuel hose clear 2-1/4"
RF215	Fuel Line Kit LS3CC
RUS644120	Fitting for fuel rail inlet LS3CC
PC122F-EFI	Fuel cell w/internal pump LS3CC
PC122F-B	Fuel Cell Bladder
HP2010	Fuel filter LS3CC
HP1200	Fuel filter replacement LS3CC
HP2010B	Fuel filter mount LS3CC
FSC1	Fuel Safe pump in tank kit LS3CC
FPHP	El. Fuel pump LS3CC
9120	battery heat shield
E5495	Battery shut off switch 4 post
MOR74102	Battery shut off switch 4 post 300 Amp.
RRCWH	Chassis Wiring Harness
E4407T	Guage Panel, W/Tach
E3316	Fuel Level Guage
KS210-10	Fuel Level Sender
E3563	Fuel Pressure Gauge LS3CC
B902CC	Switch Panel W/Accessory
B902LCC	Switch Panel Cover
B908	Dash panel cover plate
B913	Dash panel cover plate spacer
B914	Defogger Diffuser Box
B9140	Defogger blower bracket
RE195	Defogger Fan
B930	Ignition mounting plate
RF125A	Heat Shield, Extreme Temperature
RF126A	Heat Shield, Standard Grade
RF127A	Roll Aluminum Sealant Tape
B915	Heat Shield Behind Driver Seat
B80190	Windsheild Tear off
B80191	Windsheild Tear off Camaro + Mustang Gen.6
65030	Roll Bar Padding
BCS155601	Roll Bar Padding FIA Type A

465-1004	¼" Cable clamps
465-1006	3/8" Cable clamps
465-1014	1" Cable clamps
22534	Rearview Mirror
81131-106	Body, Camaro 2016 Gen.6,Incl. Front & Rear Windows.
81131-31013	Deck Lid
81131-21013R	Door Right
81131-21713L	Door Left Upper Gen.6
81131-21813L	Door Left Lower Gen.6
81131-45012	Bumper cover rear
81132-41212	Nose, upper
81002-41112	Nose. Lower
81132-23013R	Fender right front
81132-23013L	Fender left front
81131-51312	Greenhouse section front
81131-51512	Greenhouse section rear
81131-33012	Hood
81132-27313R	Quarter panel right
81132-27313L	Quarter panel left
81131-65243R	Windows quarter right
81131-65243L	Windows quarter left
81131-61243	Window rear
81131-63343	Window front
81131-76333	Windsheild brace Gen.6
81131-76133	Window brace rear Gen.6
81131-44541	Decal Tail light Gen.6
81131-44141	Decal Nose Gen.6
81001-46433B	Nose Screen Camaro + Mustang Gen.6
407500	Rocker Panel Right Gen.6
407600	Rocker Panel Left Gen.6
B92100	Vent Window Right Gen.6
B92200	Vent Window Left Gen.6
B92800	Window brace bracket R + L Gen.6
CAM2010	Body, Camaro 2010 Includes Front & Rear Windows.
40035	Left side opening door mechanism "Safety opening"
40036	Left side opening door hardware
B1017	Hood Pins, Pair,
CAMSCR	Nose Screen, Camaro 2010
CAMDLB	Deck Lid Bracket and Hinge Assy, Camaro

AS-105552	V-SPEC Wing
AA-100038	Wing sideplate carbon
B917	Splitter
B917M16	Splitter Camaro + Mustang Gen.6
B9171	Splitter Pinch plate
B918	Splitter brace
FS807-3	Splitter adj. braces
PF050	Upper brake light Led
PF024	Decal Camaro head light and front grill
PF025	Decal Camaro rear light right
PF026	Decal Camaro rear light left
CAMIFL	Extended Inner Fender behind front tire Left
CAMIFR	Extended Inner Fender behind front tire Right
CAMBB	Front and Rear Roof Support Brackets
4001	Window Net
40020	Window Net mount lower
40025	Latch Bar to net
WM KIT	AFI Wiper Kit
AM2301353	Wiper motor to AFI
AM3022160	Wiper blade to AFI
B904CC	Window Ledge Right
FS805	Window Installation Kit
B800C	Window Braces
B800CR	Window Brace rear
B1017A	Trunk Fasteners, Pair
PF027	Tow Straps
9020	Tow Hook Camaro + Mustang Gen.6
PF045	Tow decal
B927	Jack post plate
B928	Window brace bracket
B929	Exhaust exit flange plate
B9205C	Side view mirror right
B9195C	Side view mirror left
B91900	Mirror Spacer left to fit B9195C on Gen.6
B92000	Mirror Spacer right to fit B9205C on Gen.6
919	Mirror bracket left side
B920	Mirror bracket right side
90181	Ready made body mounts
90182	Ready made body mounts

B940	Lowers on Hood.
4011CAM	Hood, Camaro
4015CAM	Trunk, Camaro
4040CAM	Quarter Panel, Right, Camaro
4041CAM	Quarter Panel, Left, Camaro
4042CAM	Rear Cover, Right, Camaro
4043CAM	Rear Cover, Left, Camaro
4044CAM	Rear Cover, Center Diffuser, Camaro
B422W	Nose Plastic Camaro Right + Left
4072CAM	Fender, Right, Camaro
4073CAM	Fender, Left, Camaro
4080CAM	Door, Right, Camaro
4081CAM	Door, Left, Camaro
40810CAM	Door, Left Camaro Lower
40815CAM	Door, Right Camaro Upper
40820CAM	Roof, Rear Section, Camaro
40821CAM	Tray, Rear Window, Camaro
4082CAM	Roof, Front Section, Camaro
B8019	Front Window, cut, drilled and Blackout.
B923	Rear Window, cut, drilled and Blackout.
B921	Quarter Window, R/S
B922	Quarter Window, L/S
B924	Quarter Panel Brace
B932	Upper Hood support Right.
B93200R	Upper Hood support Right Gen.6
B932L	Upper Hood support Left.
B93200L	Upper Hood support Left Gen.6
0146EM41A	Fire extinguiser
L-102-400-001	Fire system Life Line
493	Sliding rail
ALL14190	Ballast Stud & Nut. Only to Camaro + Mustang Gen.6
ALL14197	Ballast Bracket. Only to Camaro + Mustang Gen.6
PF129	Ballast Round Bar. Only to Camaro + Mustang Gen.6

Part numbers may be changed. Changes will be notified by bulletins.



NEZ Appendix 1.2 Ford Mustang Gen.5 – Gen.6

CCR Mk1/Mk2 homologated parts and part descriptions.

P.N.	Description
LS3CC	LS3CC engine
E1599	Dry Sump Oil Tank
24255748	Pressure plate & Disc
GF4A	Transm. GF4A/G101A Special
10702P	Frame & Cage Assembly, Perimeter
35803	Front Frame, Camaro Cup
36610	Tail Section
B890	Aluminum Interior, Incl Heat Shields
342506	Radiator Duct Work Kit-RR Mustang
342518	Radiator Duct Work Kit. Mustang + Camaro Gen.6
82120M	Front Bumper Kit, Mustang, includes hood support
8212000	Front Bumper Mustang + Camaro Gen.6
8212101	Front Bumper Hood Pin bar Gen.6
82220M	Rear Bumper Kit, Mustang
8222202	Rear Bumper Gen.6
SCA827	Collapsible Steering Shaft
WQRS	Steering quick release
HE-236	Rack, Woodward Power 17.25" Threaded, .220 t/b, 955 valve, 1.5" cylinder
PF046	Rack limiter plate
14720	Rack Spacer 1/4"
14730	Rack Spacer 3/8"
T40S	P/S Pump Howe
PS2005	P/S Pump pulley Howe
PS3005	P/S Pump bracket Howe
KRC63200000	P/S Pump Evolution Alum.
KRC20002000	P/S Pump Alum.
KRC20020650	P/S Pulley LS3CC
KRC71410040	P/S Bracket LS3CC
PS8302	Power Steering Hose Kit W/Cooler
PS501	Power Steering Tank W/Bracket
R3315	Sleeve 5/8"x15" Hex Alum.
23285	Tie rod 5/8"-18 LH Inside
23286	Tie rod 5/8"-18 RH Outside
23297	Tie rod inner stud

23298	Tie rod outer stud.
31491	Bolt Kit suspension
22320	Ball Joint, Precision Upper
22330	Ball Joint, Stud Only Upper
2213907	Precision Max Upper A-Frame 9.75"
22001	Upper A-Frame Key Kit
60203	A-frame Shims 1/8"
60204	A-frame Shims 3/16"
60205	A-frame Shims 1/4"
60206	A-frame Shims 3/8"
60207	A-frame Shims 1/2"
60210S	A-frame Shims Kit
229617C	Lower control arm
22410	Ball Joint, Precision Lower
22430	Ball Joint, Stud Only Lower
AU-AM12T	Rod end 3/4" RH male
22949	Strut arm rod end angled
AU-AB12T	Rod end 3/4" LH male
346104	Spindle, Right 5X5
34610L4	Spindle, Left 5X5
SC1449HW114	Sway bar 1-1/4"
SC1449HW138	Sway bar 1-3/8"
SC1449HW112	Sway bar 1-1/2"
23925	Bushing Delron for splined swaybar
23926	Swaybar arm Left
23927	Swaybar arm Right
23611	Rear Sway Bar Kit
31180	Panhard Axle Mount Rear Ford 9"
31990	Axle clamp, special for 3" tube
30786	Panhard Assembly
30780	Panhard Mount, Frame
3252	Axle Stops
32009	Winters 9" third link bracket
20613	Wheel Studs rear
PF059	Brake upgrade kit MK2 front. Parts below marked *
36571	Front hubs 5x4,75 Steel mk2 *
20536	Hub dust cover mk2 *
20573	Brake rotor hat *
36574	T-nuts for hat *
300-0802	Bolt for T-nut *

36573G	Hans cooling gasket *
SRS800	Brake blower fan new.
SRS801	Brake blower fan adapter new.
SRS400	Brake blower fan * Out of production
SRS002	Fan blower replacement
SRS004	Engine fan blower replacement
RE307	Brake duct inlet box right *
RE307L	Brake duct inlet box left *
RE307Det1	Brake duct inlet 4,5" hose & 3" hose *
RE2034	Brake air hose 4,5" Length 14" *
RE2031	Brake air hose 3", 12' length (4m) *
RE31000	Brake Air duct box Right Mustang + Camaro Gen.6
RE31000L	Brake Air duct box Left Mustang + Camaro Gen.6
RE31000SCR	Brake Screen Mustang + Camaro Gen.6
B941L	Brake fan mount Left Pro syst. *
B941	Brake fan mount Right Prio syst. *
205500	Front hubs 5x4,75" Steel Mk1
20538	Hub dust cover Mk1
205700	Rear Hubs 5x4,75 Steel
20547	Drive flange 9"
44122	Wheel spacer 9"
TG3001-33	Axle gundrilled Left 33"
TG3001-37	Axle gundrilled Right 37"
RV102	Rear end vent assy 9"
KN62-1460	Filter for vent tank
32258	Axle tube seal 9"
QDR1	Quafie ATB Diff.
CCRMK1/Winters	Rear axle 9"
W95590	Winters 9" housing with axle tubes
WA94303	Winters 9" center section
HUR114-7494	Shift Boot Hurst
PM8182	Alternator 75A
KRC8172	Alternator 50A
90-293-1630	Alternator 40A
RE200	Naca duct single hole
KRC40140640	Alternator pulley LS3CC
GDY4060720	Drive belt LS3CC
GDY4060725	Drive belt to P/S pump T40S

E113	Alternator bracket LS3CC
E7015	ECM mount LS3CC
PF062	GM ECM LS3CC
E7016	Engine wire harness LS3CC
9026, 9027	Engine Skid Pan
R100	Engine spacer ¼"
R1005	Engine spacer ½"
E15910	Engine vent tank for valve covers LS3CC
E1597	Oil filter block off line adapter LS3CC
82892	Hydr. Bearing line and bleed kit incl. coupler
QM188395	Drive Shaft, Aluminum 39.5"
QM188545	Drive Shaft, Yoke
243950	Drive shaft steel
280	U-Joint Serve Duty
329-10	Drive Shafts U-Bolts 9"
369YOKE	Machined Yoke
36299, 36299L	Motor mounts front LS3CC
3611	Motor Mounts, Left
3613	Motor mounts, Right
ATM2271	Water temp fitting at water pump 3/8" NPT LS3CC
58982	Rad. Hose reducer 1,75" to 1,5" LS3CC
58981	Rad. Hose reducer 1,5" to 1,25" LS3CC
342411	Vertical surge tank LS3CC
28474	,75" Dia. 90° hose from surge tank to water pump LS3CC
HRP90150	1,5" 90° blue hose LS3CC
HRP45175	1,75" 45° blue hose LS3CC
34312	Rad. Hose connector 3,5" Long (1 of 1,5" dia.) LS3CC
34322	Rad. Hose connector 4" Long (1 of 1,75") LS3CC
34129C10	Radiator, W/Oil Cooler
3427	Radiator Cap
3426	Spoole Thermostat replacement
34221	Radiator Hoses, Overflow Tank & Lines
342026	Upper Radiator Mount, Left
342027	Upper Radiator Mount, Right
M162K	Fan, electric 16" pull
MFA104	Fan, mounting kit
CAN22625	Remote Oil Filter Mount

E3005	Engine Oil Filter Line Kit LS3CC
E1599	Dry sump oil tank LS3CC
E164	Dry sump oil tank mounting brackets and straps LS3CC
E165	Dry sump oil tank heat shield LS3CC
50-625-7612	Engine Oil cooler in Air box 7,5"x11" LS3CC
22-M22AN10-SE	Setrab cooler fitting
E166	Engine Oil cooler mount LS3CC
GS1003-12	Seals IT gasket
21044	SLP Air box LS3CC
25166571	Plastic GM filter mount LS3CC
25042562	Air filter GM/Ac Delco
E146	Alum. Angle filter box mount LS3CC
E7004	20° 3,5" elbow LS3CC
E7003	3,5" to 4" Hose connector LS3CC
E145	Air deflector LS3CC
H11213C	New headers LS3CC narrower chassi clearance
H2024C	Y-pip LS3CC 3,5" to 3,5" LS3CC
H2111C	Exhaust tail pipe only, old version
B907	catalytic convertor heat shield
H3032	Exhaust Hanger Center Around catalytic Converter
H3031	Muffler / Exhaust Hanger Rear
H3028	Exhaust Hanger Rubber
HPFC300	Stainless Exhaust band clamp 3"
PF140	Brake upgrade kit 2018. Below parts marked #
CP9660-3S4L	AP Caliper, 6 Piston Front Left #
CP9660-2S4L	AP Caliper, 6 Piston Front Right #
CCA029660-355	AP Caliper bracket #
BCA0212x2286B	Rotor hat (Bell) #
CP2494-589K12	Rotor bolt kit front #
FKCA029660	Fitting kit AP brakes #
120-6387-RS	Wilwood Caliper, 6 Piston, Front. Out of production.
120-6388-RS	Wilwood Caliper, 6 Piston, Front. Out of production.
120-8283L	Wilwood Caliper, 4 Piston, Rear
120-8283R	Wilwood Caliper, 4 Piston, Rear
120-11127	Wilwood Caliper, 4 Piston, Rear L&R #
120-11125	Wilwood Caliper, 4 Piston. Rear L&R
CCA0511127310	Caliper bracket #

340910	Cast clamp on bracket 9"
B716SHCS	Caliper bolts
CP5572-1137RA	Rotor, Directional Left AP Front #
CP5772-1136RA	Rotor, Directional Right AP Front #
CP1901727	Rotor, Directional Left, AP Front and Rear.
CP1901726	Rotor, Directional Right, AP Front and Rear.
CP1901782	Rotor, Directional RH AP Rear
CP1901783	Rotor, Directional LH AP Rear
B926	Brake Cooler plastic holder
B931	Caliper cooler mount
3383219	Brake Line 21" w/90° fitting
338326	Brake Line 26"
FBM2511	Brake Line Fitting
33791	Brake Line Fitting
80171	Painless Brake Light Switch
RT-RD24	Tail Lights, 70 x 118 mm LED Aftermarket
B925M	Tail Light bracket
B92501	Tail Light bracket Gen.6
TLT74-875	Master Cylinder 7/8"
TLT74-1000	Master Cylinder 1"
TLT74-200	Fitting Plastic
TLT74-208	Master cyl. Clamp
524312	Master Cylinder, Remote Reservoir 3/4"
524314	Master Cylinder, Remote Reservoir 7/8"
524316	Master Cylinder, Remote Reservoir 1"
524312K	Master Cyl. O-ring repair 3/4"
524314K	Master Cyl. O-ring repair 7/8"
524316K	Master Cyl. O-ring 1"
AU12685	Master Cylinder Hose Clamp
RD109	Master Cylinder Hose
524353	Master Cylinder Fitting
B9524	Master Cyl. Reservoir heat shield
CP0805420	Master Cylinder Reservoir, Double Port
CP0805424	Master Cylinder Reservoir, Single Port
CP2293-48	Bellows for Master Cylinder Reservoir
524361	Master Alum. Cyl. Reservoir Double port
524360	Master Alum. Cyl. Reservoir Single port
33814	Braided #4 line

33815	Braided #4 line
BR11078	1/8 npt to 3/16 inverted flare 90*
WW260-1874	Residual Valve 2#
52692	Pedal, Brake Floor Mounted
52992	Pedal, Clutch Floor Mounted
52591	Clutch Pedal Stop
5299	Dead Pedal
WW340-4990	Brake Bias Adjuster
72560	90* Bias Adjuster
TC1000LS1	Throttle Cable LS3CC
52502	Engine mount for throttle cable LS3CC
5237	Pedal, Gas
52351	Throttle Stop
OP-11B	Fuel Cell bracket
13202	Fuel Filler
RE103	Filler Neck Top mount Mustang + Camaro Gen.6
RF102	Fuel hose clear 2-1/4"
13202B	Fuel Filler bracket
RF215	Fuel Line Kit LS3CC
RUS644120	Fitting for fuel rail inlet LS3CC
PC122F-EFI	Fuel cell w/internal pump LS3CC
PC122F-B	Fuel Cell Bladder
HP2010	Fuel filter LS3CC
HP1200	Fuel filter replacement LS3CC
HP2010B	Fuel filter mount LS3CC
FSC1	Fuel Safe pump in tank kit LS3CC
FPHP	El. Fuel Pump LS3CC
9120	battery heat shield
E5495	Battery shut off switch 4 post
MOR74102	Battery shut off switch 4 post 300Amp
RRCWH	Chassis Wiring Harness
E4407T	Guage Panel, W/Tach
E3316	Fuel Level Guage
KS210-10	Fuel Level Sender
E3563	Fuel Pressure Gauge LS3CC
B902CC	Switch Panel W/Accessory
B902LCC	Switch Panel Cover

B908	Dash panel cover plate
B913	Dash panel cover plate spacer
B914	Defogger Diffuser Box
B9140	Defogger blower bracket
RE195	Defogger Fan
B930	Ignition mounting plate
RF125A	Heat Shield, Extreme Temperature
RF126A	Heat Shield, Standard Grade
RF127A	Roll Aluminum Sealant Tape
B915	Heat Shield Behind Driver Seat
B80190	Windsheild Tear off
B80191	Windsheild Tear off Mustang + Camaro Gen.6
65030	Roll Bar Padding
BCS155601	Roll Bar Padding FIA Type A
465-1004	¼" Cable clamps
465-1006	3/8" Cable clamps
465-1014	1" Cable clamps
22534	Rearview Mirror
81321-106	Body, Mustang 2016 Gen.6, Incl. Front & Rear windows.
81321-31013	Deck Lid
81321-21013R	Door Right
81321-21713L	Door Left Upper
81321-21813L	Door Left Lower
81321-4501	Bumper Cover rear
81321-41212	Nose, upper
81001-41112	Nose, Lower
81322-23013R	Fender right front
81322-23013L	Fender left front
81321-51312	Greenhouse section, front
81321-51512	Greenhouse section, rear
81321-33012	Hood
81322-27313R	Quarter panel right
81322-27313L	Quarter panel left
81321-65243R	Windows quarter right
81321-65243L	Windows quarter left
81321-61243	Window rear
81321-63343	Window front

81321-76333	Windshield brace
81321-76133	Window brace rear
81321-44541	Decal Tail light
81321-44141	Decal Nose kit
81001-46433B	Nose Screen Mustang + Camaro Gen.6
407501	Rocker Panel Right
407601	Rocker Panel Left
B92101	Vent Window Right
B92201	Vent Window Left
B92801	Window Brace Bracket L+R
4403	Body, Mustang 2013 ,Includes Front & Rear Windows.
40036	Left side opening door hardware
MICP	Interior crush panel conversion kit
B1017	Hood Pins, Pair,
MUSSCR	Nose Screen, Mustang lower
MUSSCRUPR	Nose Screen, Mustang Upper
MUSDLB	Deck Lid Bracket and Hinge Assy, Mustang
AS-105552	V-SPEC Wing
AA-100038	Wing sideplate carbon
B917M	Splitter Mustang
B917M16	Splitter Mustang + Camaro Gen.6
B9171	Splitter pinch plate
B918	Splitter brace
FS807-3	Splitter adj. Braces
PF050	Upper brake light Led
MUSTHLD	Decal Mustang head light and front grill
MUSTLDR	Decal Mustang rear light, right
MUSTLDL	Decal Mustang rear light, left
MUSTCAP	Decal Mustang gas cap
MUSIFL	Extended Inner Fender behind front tire Left Mustang
MUSIFR	Extended Inner Fender behind front tire Right Mustang
MUSBB	Front and Rear Roof Support Brackets Mustang
4001	Window Net
40020	Window Net mount lower
40025	Latch bar to net.
WM KIT	AFI Wiper Kit
AM2301353	Wiper Motor to AFI

AM3022160	Wiper Blade to AFI
FS805	Window Installation Kit
B800M	Window Braces Mustang
B800MR	Window Brace rear Mustang
B1017A	Trunk Fasteners, Pair
PF027	Tow Straps
9020	Tow Hook Mustang + Camaro Gen.6
P045	Tow decal
B927	Jack post plate
B928M	Front Window brace bracket Mustang
B929M	Exhaust exit flange plate Mustang
15175-A32	Side view mirror right Mustang
15175-A31	Side view mirror left Mustang
B9205M	Side view mirror right Gen.6
B9195M	Side view mirror left Gen.6
B91921	Mirror bracket L. Camaro mirror on Mustang gen.6
B92021	Mirror bracket R. Camaro mirror on Mustang gen.6
B91931	Mirror spacer L. Camaro mirror on Mustang gen.6
B92031	Mirror spacer R. Camaro mirror on Mustang gen.6
B9195C	Side view mirror L. Camaro to Mustang gen.6 only.
B9205	Side view mirror R. Camaro to Mustang gen.6 only.
22549	Side view mirror left Nascar Mustang
B919M	Mirror bracket left side Mustang
B920M	Mirror bracket right side Mustang
B932M	Cowl support right Mustang
B932ML	Cowl support left Mustang
B93201L	Upper Hood support Left Gen.6
B93201R	Upper Hood support Right Gen.6
90181	Ready made body mounts
90182	Ready made body mounts
B940	Lowers on Hood
4011M	Hood, Mustang
4015M	Trunk, Mustang
4040M	Quarter Panel, Right, Mustang
4041M	Quarter Panel, Left, Mustang
4042M	Rear Cover, Right, Mustang
4043M	Rear Cover, Left, Mustang
4044M	Rear Cover, Center Diffuser, Mustang

4045M	Nose fiberglass R Mustang
4046M	Nose fiberglass L Mustang
4072M	Fender, Right, Mustang
4073M	Fender, Left, Mustang
4080M	Door, Right, Mustang
4081M	Door, Left, Mustang
40810M	Door Left Mustang Lower
40815M	Door Left Mustang Upper
40820M	Rear deck filler Mustang
4082M	Roof front Mustang
B8019M	Front Window, cut, drilled and Blackout. Mustang
B923M	Rear Window, cut, drilled and Blackout. Mustang
B921M	Quarter Window, R Mustang
B922M	Quarter Window, L Mustang
493	Sliding rail
0146EM41A	Fire Extinguisher
L-102-400-001	Fire system Life Line
ALL14190	Ballast stud & nut. Only to Mustang + Camaro Gen.6
ALL14197	Ballast bracket. Only to Mustang + Camaro Gen.6
PF129	Ballast round bar. Only to Mustang + Camaro Gen.6

Part numbers may be changed. Changes will be notified by bulletins.



NEZ Appendix 1.3 Dodge Challenger Gen.3

CCR Mk1/Mk2 homologated parts and part descriptions.

P.N.	Description
LS3CC	LS3CC engine
E1599	Dry sump oil tank
24255748	Pressure plate & Disc
GF4A	Transm. GF4A/G101A Special.
10702P	Frame & Cage Assembly, Perimeter
35803	Front Frame,
36610	Tail Section
B890	Aluminum Interior, Incl Heat Shields
342509	Radiator Duct Work Kit Challenger
82120D	Front Bumper Kit, Challenger, includes hood support
82220D	Rear Bumper Kit, Challenger.
SCA827	Collapsable Steering Shaft
WQRS	Steering quick release
HE-236	Rack, Woodward Power 17.25" Threaded, .220 t/b, 955 valve, 1.5" cylinder
PF046	Rack limiter plate
14720	Rack Spacer 1/4"
14730	Rack Spacer 3/8"
T40S	P/S Pump Howe
PS2005	P/S Pump pulley Howe
PS3005	P/S Pump bracket Howe
KRC63200000	P/S Pump Evolution Alum.
KRC20002000	P/S Pump Alum.
KRC20020650	P/S Pulley LS3CC
KRC71410040	P/S Bracket LS3CC
PS8302	Power Steering Hose Kit W/Cooler
PS501	Power Steering Tank W/Bracket
R3315	Sleeve 5/8"x15" Hex Alum.
23285	Tie rod 5/8"-18 LH Inside
23286	Tie rod 5/8"-18 RH Outside
23297	Tie rod inner stud
23298	Tie rod outer stud
31491	Bolt Kit suspension
22320	Ball Joint, Precision Upper
22330	Ball Joint, Stud Only Upper
2213907	Precision Max Upper A-Frame 9.75"
22001	Upper A-Frame Key Kit

60203	A-frame Shims 1/8"
60204	A-frame Shims 3/16"
60205	A-frame Shims 1/4"
60206	A-frame Shims 3/8"
60207	A-frame Shims 1/2"
60210S	A-frame Shims Kit
229617C	Lower control arm
22410	Ball Joint, Precision Lower
22430	Ball Joint, Stud Only Lower
AU-AM12T	Rod end 3/4" RH male
22949	Strut arm rod end angled
AU-AB12T	Rod end 3/4" LH male
346104	Spindle, Right 5X5 Camaro Cup
34610L4	Spindle, Left 5X5 Camaro Cup
SC1449HW114	Sway bar 1-1/4"
SC1449HW138	Sway bar 1-3/8"
SC1449HW112	Sway bar 1-1/2"
23925	Bushing Delron for splined swaybar
23926	Swaybar arm Left
23927	Swaybar arm Right
23611	Rear Sway Bar Kit
31180	Panhard Axle Mount Rear Ford 9"
31990	Axle clamp, special for 3" tube
30786	Panhard Assembly
30780	Panhard Mount, Frame
3252	Axle Stops
32009	Winters 9" third link bracket
20613	Wheel Studs rear.
PF059	Brake upgrade kit MK2 front, Parts below marked *
36571	Front Hubs, 5X4.75, Steel mk2 *
20536	Hub Dust Cover mk2 *
20573	Brake rotor hat *
36574	T-nuts for hat *
300-0802	Bolt for t-nut *
36573G	Hans cooling gasket *
SRS800	Brake blower fan new.
SRS801	Brake blower fan adapter new.
SRS400	Brake blower fan * Out of production.
SRS002	Fan blower replacement

SRS004	Engine fan blower replacement
RE309	Brake cooler nose air duct kit right *
RE309L	Brake cooler nose air duct kit left *
RE309S	Screen for brake duct *
RE2034	Brake air hose 4,5" Length 14" *
RE2031	Brake air hose 3" Length 12' (4m) *
B941L	Brake fan mount Left Pro syst. *
B941	Brake fan mount Right Pro syst. *
205500	Front hubs 5x4,75" Steel Mk1
20538	Hub dust cover Mk1
205700	Rear Hubs 5x4,75 Steel
20547	Drive flange 9"
44122	Wheel spacer 9"
TG3001-33	Axle gundrilled Left 33"
TG3001-37	Axle gundrilled Right 37"
RV102	Rear end vent assy 9"
KN62-1460	Filter for vent tank
32258	Axle tube seal
QDR1	Quafie ATB Diff.
CCRMk1/Winters	Rear axle 9"
W95590	Winters 9" housing with axle tubes
WA94303	Winters 9" center section
HUR114-7494	Shift Boot Hurst
PM8182	Alternator 75A
KRC8172	Alternator 50A
90-293-1630	Alternator 40A
RE200	Naca duct single hole
KRC40140640	Alternator pulley LS3CC
GDY4060720	Drive belt LS3CC
GDY4060725	Drive belt to P/S pump T40S
E113	Alternator bracket LS3CC
E7015	ECM mount LS3CC
PF062	GM ECM LS3CC
E7016	Engine wire harness LS3CC
9026, 9027	Engine Skid Pan
R100	Engine spacer ¼"
R1005	Engine spacer ½"

E15910	Engine vent tank for valve covers LS3CC
E1597	Oil filter block off line adapter LS3CC
82892	Hydr. Bearing line and bleed kit incl. coupler
QM188395	Drive Shaft, Aluminum 39.5"
QM188545	Drive Shaft, Yoke
243950	Drive shaft steel
280	U-Joint Serve Duty
329-10	Drive Shafts U-Bolts 9"
369YOKE	Machined Yoke
36299, 36299L	Motor mounts front LS3CC
3611	Motor Mounts, Rear Left
3613	Motor Mounts Rear Right
ATM2271	Water temp fitting at water pump 3/8" NPT LS3CC
58982	Rad. Hose reducer 1,75" to 1,5" LS3CC
58981	Rad. Hose reducer 1,5" to 1,25" LS3CC
342411	Vertical surge tank LS3CC
28474	,75" Dia. 90° hose from surge tank to water pump LS3CC
HRP90150	1,5" 90° blue hose LS3CC
HRP45175	1,75" 45° blue hose LS3CC
34312	Rad. Hose connector 3,5" Long (1 of 1,5" dia.) LS3CC
34322	Rad. Hose connector 4" Long (1 of 1,75") LS3CC
34129C10	Radiator, W/Oil Cooler
3427	Radiator Cap
3426	Spool Thermostat replacement
34221	Radiator Hoses, Overflow Tank & Lines
342026	Upper Radiator Mount, Left
342027	Upper Radiator Mount, Right
M162K	Fan, electric 16" pull
MFA104	Fan, mounting kit
CAN22625	Remote Oil Filter Mount
E3005	Engine Oil Filter Line Kit LS3CC
E1599	Dry sump oil tank LS3CC
E164	Dry sump oil tank mounting brackets and straps LS3CC
E165	Dry sump oil tank heat shield LS3CC
50-625-7612	Engine Oil cooler in Air box 7,5"x11" LS3CC
22-M22AN10-SE	Setrab cooler fitting
E166	Engine Oil cooler mount LS3CC

GS1003-12	Seals IT gasket
21044	SLP Air box LS3CC
25166571	Plastic GM filter mount LS3CC
25042562	Air filter GM/AC Delco
E146	Alum. angle filter box mount LS3CC
E7004	20° 3,5" elbow LS3CC
E7003	3,5" to 4" Hose connector LS3CC
E145	Air deflector LS3CC
H11213C	New headers LS3CC narrower chassi clearance LS3CC
H2024C	Y-pip LS3CC 3,5" to 3,5" LS3CC
H2111C	Exhaust tail pipe only, old version
B907	catalytic convertor heat shield
H3032	Exhaust Hanger Centred Around catalytic Converter
H3031	Muffler / Exhaust Hanger Rear
H3028	Exhaust Hanger Rubber
HPFC300	Stainless Exhaust band clamp 3"
PF140	Brake upgrade kit 2018. Below parts marked #
CP9660-3S4L	AP Caliper, 6 Piston Front Left #
CP9660-2S4L	AP Caliper, 6 Piston Front Right #
CCA029660-355	AP Caliper bracket #
BCA0212x2286B	Rotor hat (Bell) #
CP2494-589K12	Rotor bolt kit front #
FKCA029660	Fitting kit AP brakes #
120-6387-RS	Wilwood Caliper, 6 Piston, Front. Out of production.
120-6388-RS	Wilwood Caliper, 6 Piston, Front. Out of production.
120-8283L	Wilwood Caliper, 4 Piston, Rear
120-8283R	Wilwood Caliper, 4 Piston, Rear
120-11127	Wilwood Caliper, 4 Piston Rear L&R #
120-11125	Wilwood Caliper, 4 Piston. Rear L&R
CCA0511127310	Caliper bracket #
340910	Cast clamp on bracket 9"
B716SHCS	Caliper bolts
CP5772-1137RA	Rotor, Directional Left. AP Front #
CP5772-1136RA	Rotor, Directional Right. AP Front #
CP1901727	Rotor, Directional Left, AP Front and Rear.
CP1901726	Rotor, Directional Right, AP Front and Rear.
CP1901782	Rotor, Directional RH AP Rear

CP1901783	Rotor, Directional LH AP Rear
B926	Brake Cooler plastic holder
B931	Caliper cooler mount
SRS400	Brake blower fan
3383219	Brake Line 21" w/90* fitting
338326	Brake Line 26"
FBM2511	Brake Line Fitting
33791	Brake Line Fitting
80171	Painless Brake Light Switch
RT-RD24	Tail Lights, 70 x 118 mm LED Aftermarket
B925C	Tail Lights bracket
TLT74-875	Master Cylinder 7/8"
TLT74-1000	Master Cylinder 1"
TLT74-200	Fitting Plastic
TLT74-208	Master Cyl. Clamp
524312	Master Cylinder, Remote Reservoir 3/4"
524314	Master Cylinder, Remote Reservoir 7/8"
524316	Master Cylinder, Remote Reservoir 1"
524312K	Master Cyl. O-ring repair 3/4"
524314K	Master Cyl. O-ring repair 7/8"
524316K	Master Cyl. O-ring repair 1"
AU12685	Master Cylinder Hose Clamp
RD109	Master Cylinder Hose 5/16"
524353	Master Cylinder Fitting
B9524	Master cyl. Reservoir heat shield
CP0805420	Master Cylinder Reservoir, Double Port
CP0805424	Master Cylinder Reservoir, Single Port
CP2293-48	Bellows for Master Cylinder Reservoir
524361	Master Alum. Cyl. Reservoir Double port
524360	Master Alum. Cyl. Reservoir Single port
33814	Braided #4 line
33815	Braided #4 line
BR11078	1/8 npt to 3/16 inverted flare 90*
WW260-1874	Residual Valve 2#
52692	Pedal, Brake Floor Mounted
52992	Pedal, Clutch Floor Mounted
52591	Clutch Pedal Stop
5299	Dead Pedal

WW340-4990	Brake Bias Adjuster
72560	90° Bias Adjuster
TC1000LS1	Throttle Cable LS3CC
52502	Engine mount for throttle cable LS3CC
5237	Pedal, Gas
52351	Throttle Stop
OP-11B	Fuel Cell bracket
13202	Fuel Filler
13202B	Fuel Filler bracket
RF215	Fuel Line Kit LS3CC
RUS644120	Fitting for fuel rail inlet LS3CC
PC122F-EFI	Fuel cell w/internal pump LS3CC
PC122F-B	Fuel Cell Bladder
HP2010	Fuel filter LS3CC
HP1200	Fuel filter replacement LS3CC
HP2010B	Fuel filter mount LS3CC
FSC1	Fuel Safe pump in tank kit LS3CC
FPHP	El. Fuel pump LS3CC
9120	battery heat shield
E5495	Battery shut off switch 4 post
MOR74102	Battery shut off switch 4 post 300Amp
RRCWH	Chassis Wiring Harness
E4407T	Guage Panel, W/Tach
E3316	Fuel Level Guage
KS210-10	Fuel Level Sender
E3563	Fuel Pressure Gauge LS3CC
B902CC	Switch Panel W/Accessory
B902LCC	Switch Panel Cover
B908	Dash panel cover plate
B913	Dash panel cover plate spacer
B914	Defogger Diffuser Box
B9140	Defogger blower bracket
RE195	Defogger Fan
B930	Ignition mounting plate
RF125A	Heat Shield, Extreme Temperature
RF126A	Heat Shield, Standard Grade
RF127A	Roll Aluminum Sealant Tape

B915	Heat Shield Behind Driver Seat
B80190	Windsheid tear off
65030	Roll Bar Padding
BCS155601	Roll Bar Padding FIA Type A
465-1004	¼" Cable clamps
465-1006	3/8" Cable clamps
465-1014	1" Cable clamps
22534	Rearview Mirror
4408	Body, Challenger 2014, Includes Front & Rear Windows.
40036	Left side opening door hardware
B1017	Hood Pins, Pair,
CHASCR	Nose Screen, Challenger
CHADLB	Deck Lid Bracket and Hinge Assy, Challenger
B932LD	Cowl support Left Challenger
B932RD	Cowl support Right Challenger
AS-105552	V-SPEC Wing
AA-100038	Wing sideplate carbon
B917D	Splitter
B9171	Splitter Pinch plate
B918	Splitter brace
FS807-3	Splitter adj. braces
PF050	Upper brake light LED
CHAHL D	Decal Challenger head light and front grill
CHATLDR	Decal Challenger rear light right
CHATLDL	Decal Challenger rear light left
CAMIFL	Extended Inner Fender behind front tire Left
CAMIFR	Extended Inner Fender behind front tire Right
CHABB	Front and Rear Roof Support Brackets
4001	Window Net
40020	Window Net mount lower
40025	Latch bar to net.
WM KIT	AFI Wiper Kit
AM2301353	Wiper motor to AFI
AM3022160	Wiper blade to AFI
FS805	Window Installation Kit
B800D	Window Braces
B800DR	Window Brace rear

B1017A	Trunk Fasteners, Pair
PF027	Tow Straps
PF045	Tow decal
B927	Jack post plate
B928D	Window brace bracket
B929D	Exhaust exit flange plate
B9195D	Side view mirror right
B9205D	Side view mirror left
B919D	Mirror bracket left side
B920D	Mirror bracket right side
90181	Ready made body mounts
90182	Ready made body mounts
B940	Lowers on Hood.
4011D	Hood, Challenger
4015D	Trunk, Challenger
4040D	Quarter Panel, Right, Challenger
4041D	Quarter Panel, Left, Challenger
4042D	Rear Cover, Right, Challenger
4043D	Rear Cover, Left, Challenger
4044D	Rear Center Diffuser, Challenger
4045DN	Nose Left Challenger
4046DN	Nose Right Challenger
4072D	Fender, Right, Challenger
4073D	Fender, Left, Challenger
4080D	Door, Right, Challenger
4081D	Door, Left, Challenger Lower
40815D	Door, Left, Challenger Upper
40820D	Roof, Rear Section, Challenger
4082D	Roof, Front Section, Challenger
B8019D	Front Window, cut, drilled and Blackout. Challenger
B923D	Rear Window, cut, drilled and Blackout. Challenger
B921D	Quarter Window, R/S Challenger
B922D	Quarter Window, L/S Challenger
B924	Quarter Panel Brace
493	Sliding rail
0146EM41A	Fire extinguisher
L-102-400-001	Fire system Life Line

Part numbers may be changed. Changes will be notified by bulletins.



NEZ V8 Thunder Cars Bulletin 20180226-1

Eligible cars:

During 2018 there is only two cars with old Chevrolet 350ci ZZ4 V8 engine that will be allowed to participate in NEZ V8 Thunder Cars racing series.
From 2019 this engine will be prohibited.

Those cars have following chassis number and starting number:

Chassis number H3490 and starting number #22.

Chassis number H3506 and starting number #50.

These engines must follow old engine rules as follow:

Bilaga 1.4 Motor GM ZZ4

GM part number:

24502609 Chevrolet engine ZZ4

10105123 Engineblock

12556307 Crankshaft. Castingnr:14088532

12556463 Head

12480002 Camshaft kit

24502586 Camshaft

12551483 Valve springs or Crane Cams valve springs part nr:99846-16.

10212808 Retainers or replacement nr: 19169661

12370839 Roller rockers

10185063 Intake manifold

5,1 Free components:

Valves, but dimensions must be retain original 1,94" intake and 1,50" exhaust.
Material must be steel.

Valve locks, Valve sealings, Pushrods.

Valve lifters, but must be hydraulic roller lifter.

Valve guides free.

Timing chain. Must be chain type.

Camshaft cover.

Flywheel with starter ring gear. Min.weight = 6800kilogram and made of steel.

Main and Rod bearings..

Torsion damper.

Pistons, made by aluminum, cast or forged type. Piston top must be totally flat. Machining of valve pockets are allowed.

Piston rings.

Rod Bolt in Steel.

Rods made in steel. Min.weight =590kilogram with bolt/nut washer included.

Min.length = 5,700" Max length =6,100".

Screw, nuts, plugs, washers, freeze plugs.

Oil pump, must be mechanical driven and mounted on original location.

Oil pump shaft.

Oil pick up.

Oil pan. We recommend part nr: CP100LTRB-RR.

Gaskets, but steel gasket between engine block and heads are NOT allowed.

5,2 Maching engine block.

Max. Cyl. drill dia = 102,50mm.

Max. stroke = 88,39mm.

Min. distance between engine block/head surface and crankshaft center = 228,50mm.

It is allowed to put in max. 4 sleeves to allow repair of engine block.

Cyl.drilling, flatness grinding, block decking, line honing is allowed.

5,3 Heads

Volume combustion chamber = min.55cc. Volume measures with valves and spark plug mounted, without head gasket.

Flatness grinding of heads allowed, machining to allow valve guides allowed.

Valve seat angles are free in steel seat.

5,4 Crank shaft

Grinding of main and rod pin is allowed.

Balance and surface hardening is allowed.

Min. weight = 23 360kilogram.

5,5 Carburetor

Holley 750cfm part nr: 4779

Choke valve and controls are allowed to remove.

Free parts: Main nozzle, Acceleration nozzle, Acceleration pumps and floaters.

Distance between carb and manifold is mandatory. Thickness Min. 25,00mm Max. 28,00mm including gaskets.

Air filter free, but following dim. Must be kept 14" x 4".

Fuel E85 should be used.

5,6 Clutch

Clutch is free, on ZZ4 engine, with following limitation: Max. 1pc. Clutch disc.
Hydraulic release bearing free.

5,7 Ignition

Distributor: MSD 85551

Ignition box: MSD 6AL 6420 or 6425

Ignition coil: MSD 8252

Spark plug wires free.

Spark plugs free.